

...ple have been using
...ite the prohibition.
...concrete on this road
...tly finished and con-
...ge may be done if
...ntinues. It was stat-
...prosecutions will fol-
...lations of the order
...commission are con-

CONVENTION—Mr. and
Kratwell returned last
Superior where they
ate convention of the
ter Barbers of Amer-
ort the convention a
ith more than 200 in
e banquet. The 1929
e held in Racine.
k and Albert J. Dern
e convention.

...r. and Mrs. Charles
umboldt avenue, yes-
Wausau Memorial

Pilot Says Wausau Port Best

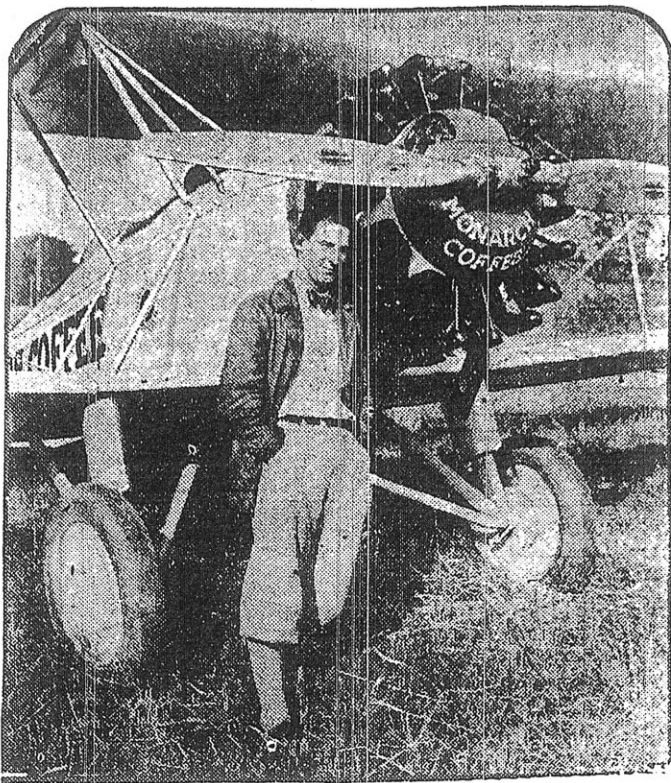
Equipment for Flying Praised by Flying Officer

...airport is the most
...ped airport I have
...Wisconsin" says Cap-
...lizer of Milwaukee,
...s Oil company, who
...nger flights over the

...t for an airport not
...ent to have complete
...ent for night flying.
...of Lake Wausau,
...e landings possible,
...arkable feature of

...flying tonight I will

ARCTIC FLYER IN AIR TOUR



ALGER GRAHAM AND BUHL BIPLANE

Alger Graham, who became famous last year when he piloted the plane in the Wilkins Arctic expedition, is pictured above with the plane, a Buhl Airster, he will arrive here with tomorrow as a contestant in the Ford reliability air tour. Graham is one of the outstanding pilots in the present tour and first became prominent in flying circles as a member of the Royal Flying corps in the World war. Graham is a member of the Explorers' club.

From Al Smith

the political situation and predictions

Welc Ma

10:00 o'clock
through the
uses will
flyers and
pilot, John
"Waco" Co-
probably
tional (the
of the fa-
leading
through
cording
manager
Wood ca-
head of
worst of
fore lan-
line.

Beside
trophy a-
is the
prizes to
Board of
soring the
prize of
addition
\$1,500 for
fourth p-
the tour
gained t-
phases of
addition
Spark P-
and the
arch Coff-

Some
is going
through
arch coff-
mittee or
to be us-
ger of the
coffee m-
tour leav-
come the
for the
Ray Sec-